



MSS 7000

We are strengthening our position as a global leader in airborne maritime surveillance with the development of our latest generation of airborne maritime surveillance system. New features in the MSS 7000 include:

- **Improved Multi-mission capability – including improved support for search and rescue and over land applications**
- **Improved situation overview**
 - Integrated Ship image data base
 - Target correlation and filtering
- **Two large touch screens for ease of operation**
- **Improved cooperation with ground command:**
 - Real time transfer of data and video
 - Exchange of geographical data in standard formats
- **More power in less weight and volume**

Vision

Our vision with MSS 7000 is to build a system which every operator will be happy to work with and which governmental organizations would be proud to have invested in, a system which every citizen would be grateful to know it is being used to safeguard their lives and the environment that they will leave to their children.

The new generation is based on earlier MSS versions and collected experiences from more than twenty coast guard customers around the world.

The MSS 7000 system has the same central focus as its predecessors to produce the most accurate, reliable and comprehensive maritime domain awareness picture in real time for the coast guard organization, and:

To support more efficient missions by allowing the operator to work more productively focusing on monitoring, identifying and communicating critical information on sea surface activities.



ST AIRBORNE SYSTEMS 
Experts in maritime surveillance

MSS 7000

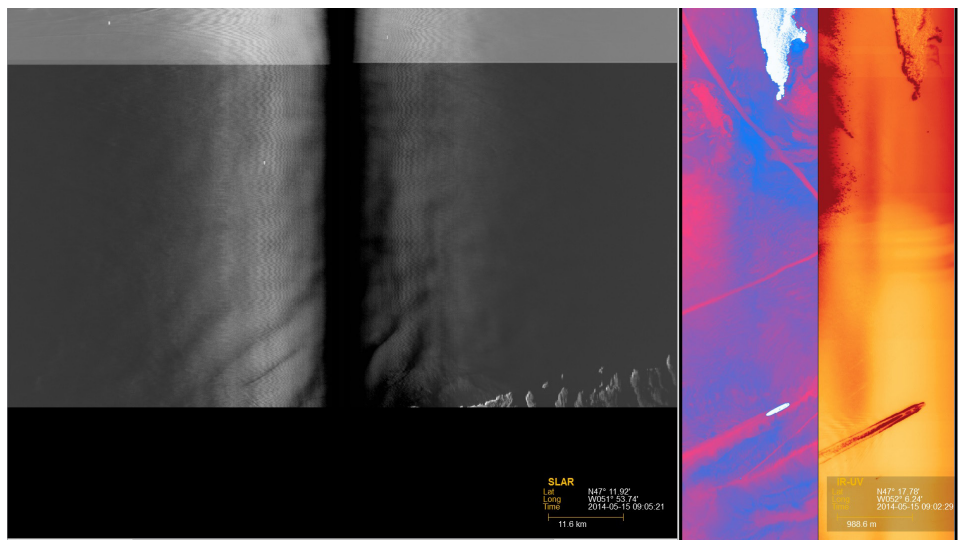
We are proudly presenting our seventh generation airborne maritime surveillance system. The new generation extends the **multi-mission** capability of the system; Maritime as well as Overland missions are supported and the system incorporates mission specific display layouts designed for **optimum mission efficiency**. Target detection, identification and correlation capabilities have been extended. **Real time data transfer** and the capability for data exchange with the mission command in standard geographical information formats also extends the connectivity with ground command.

Improved situation awareness and ease of operation

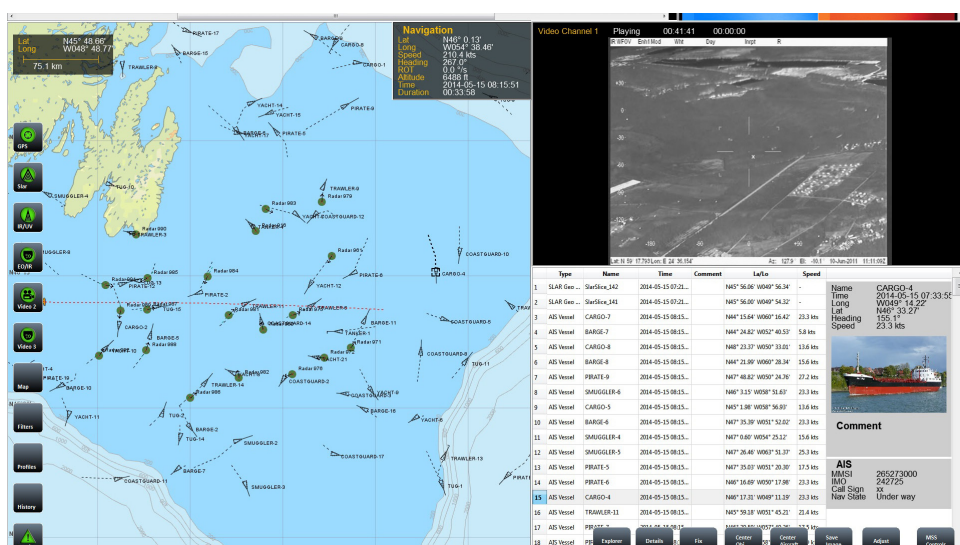
Two large touch screens with different predefined window layouts adapted to the specific mission type give an unprecedented situation overview as well as a further improved ease of operation.

Target correlation and filtering

MSS 7000 is equipped with a **ship image database** and built-in association of radar targets and AIS contacts (as well as an automatic notification to the operator when a radar target does not show a corresponding AIS identity). When an AIS contact is acquired during flight, the corresponding ship image from the database can be displayed for double check. The operator can also **add images** to the database during the mission; still camera images or EO/IR images. Conversely the operator can also select to display the AIS identity of a ship live in the EO/IR image when the camera is looking in the direction of the ship. Through **powerful filter and search functions** the operator now has great flexibility in filtering out exactly the targets and objects that he wants to have overlaid on the tactical map. Filters can be defined, applied and removed at any time. The filtering functions in the MSS 7000 can also be used for **anomaly detection**, in order to alert the operator of unusual behavior of targets and or unexpected or potentially illegalevents. The operator can define flexible sets of rules, e.g. a geographical area, speed and course limits for observed targets. Targets that meet the defined rule criteria will generate a visual alert, with information on what rule was engaged. Several rules may be in effect simultaneously.



Top screen with SLAR and IR/UV images



Bottom screen shows tactical map with AIS targets, FLIR image and target list correlated with ship image data base

Connectivity and reporting

The MSS 7000 is **OGC compatible** and supports export and import of **GIS data in standard formats**, i.e. geo-referenced images, sensor data, targets and other overlay graphics. Updated background maps will also support cooperation with other units, on land as well as on the sea surface.

Real-time video streaming is supported through the Satcom interface.

More power - less volume

Last but not least, the MSS 7000 is based on more modern technology and is therefore **smaller and lighter** but with a **vastly improved computing power and data throughput**. The new design also offers great flexibility as regards selection of sensors, aircraft installation and operator console configuration.

MSS 7000

Excellence Expertise Efficiency
- your best choice for successful
surveillance missions!



ST AIRBORNE SYSTEMS
Experts in maritime surveillance

www.airbornesystems.se